

CHEMISTRY KILLS

Cigarette smoke contains more than

7,000 CHEMICALS

with hundreds that are harmful and about 70 that can cause cancer.¹

599 ADDITIVES

additives are on the composite list of what may be added to cigarettes than what the tobacco companies released to the government in 1994. This list includes all the ingredients that are used, although it does not state which companies they are used by or which brands they are used in.²



CARBON MONOXIDE

Carbon Monoxide is a toxic gas, which can cause death, and it's found in tobacco smoke.³

HYDROGEN CYANIDE

exposure causes cardiovascular and respiratory illness. There's hydrogen cyanide in rat poison. There's also hydrogen cyanide in tobacco smoke.⁴



HYDRAZINE

is found in rocket fuel. It's also found in cigarettes.^{5,6}

RADIOACTIVE POLONIUM-210

is found in cigarette smoke. Polonium-210 contributes to cancer.⁷



FORMALDEHYDE

Formaldehyde is found in embalming fluid that's used to preserve the dead. Formaldehyde is also found in cigarette smoke.⁸

ACETONE

removes nail polish. It is also found in cigarette smoke.⁹

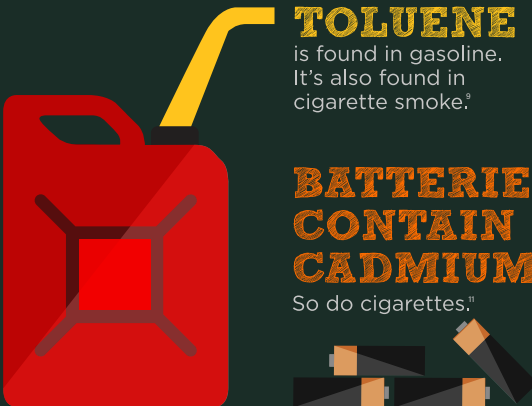


TOLUENE

is found in gasoline. It's also found in cigarette smoke.¹⁰

BATTERIES CONTAIN CADMIUM.

So do cigarettes.¹¹



SOURCES:

- ¹ U.S. Department of Health and Human Services. The Health Consequences of Smoking—50 Years of Progress: A Report of the Surgeon General. Atlanta: U.S. Department of Health and Human Services, Centers for Disease Control and Prevention, National Center for Chronic Disease Prevention and Health Promotion, Office on Smoking and Health, 2014 [accessed 2017 Jan 24].
- ² "Smoking and Tobacco Control." U.S. Department of Health and Human Services, Public Health Service, National Institutes of Health, National Cancer Institute. Bethesda, MD. Risks Associated with Smoking Cigarettes with Low Machine-Measured Yields of Tar and Nicotine. 19 Nov. 2001: 176-80. http://cancercontrol.cancer.gov/brp/t-crb/monographs/13/m13_complete.pdf
- ³ U.S. Department of Health and Human Services (USDHHS). A Report of the Surgeon General: How Tobacco Smoke Causes Disease: What It Means to You (Consumer Booklet). Atlanta, GA: U.S. Department of Health and Human Services, Centers for Disease Control and Prevention, National Center for Chronic Disease Prevention and Health Promotion, Office on Smoking and Health; 2010.
- ⁴ Smoking and Tobacco Control. "U.S. Department of Health and Human Services. Public Health Service, National Institutes of Health, National Cancer Institute. Risks Associated with Smoking Cigarettes with Low Machine-Measured Yields of Tar and Nicotine, Oct 2001:180.
- ⁵ Hydrazine, 1,1-Dimethylhydrazine and 1, 2-Dimethylhydrazine. "Agency for Toxic Substances and Disease Registry, June 2013.
- ⁶ Smoking and Tobacco Control. "U.S. Department of Health and Human Services. Public Health Service, National Institutes of Health, National Cancer Institute. Risks Associated with Smoking Cigarettes with Low Machine-Measured Yields of Tar and Nicotine, Oct 2001:180.
- ⁷ Smoking and Tobacco Control. "U.S. Department of Health and Human Services. Public Health Service, National Institutes of Health, National Cancer Institute. Risks Associated with Smoking Cigarettes with Low Machine-Measured Yields of Tar and Nicotine, Oct 2001:180.
- ⁸ Controlling Formaldehyde Exposures During Embalming. CDC 06 June 2014. Web.
- ⁹ McKeown, NJ. Toluene Toxicity. Medscape, 01 Feb. 2015. Web
- ¹⁰ "ToxFAQs™ for Acetone." Agency for Toxic Substances and Disease Registry. Atlanta, GA., Sept. 1995. Web
- ¹¹ U.S. Department of Health and Human Services (USDHHS). A Report of the Surgeon General: How Tobacco Smoke Causes Disease: What It Means to You (Consumer Booklet). Atlanta, GA: U.S. Department of Health and Human Services, Centers for Disease Control and Prevention, National Center for Chronic Disease Prevention and Health Promotion, Office on Smoking and Health; 2010.
- ¹² Smoking and Tobacco Control. "U.S. Department of Health and Human Services. Public Health Service, National Institutes of Health, National Cancer Institute. Risks Associated with Smoking Cigarettes with Low Machine-Measured Yields of Tar and Nicotine, Oct 2001:180.